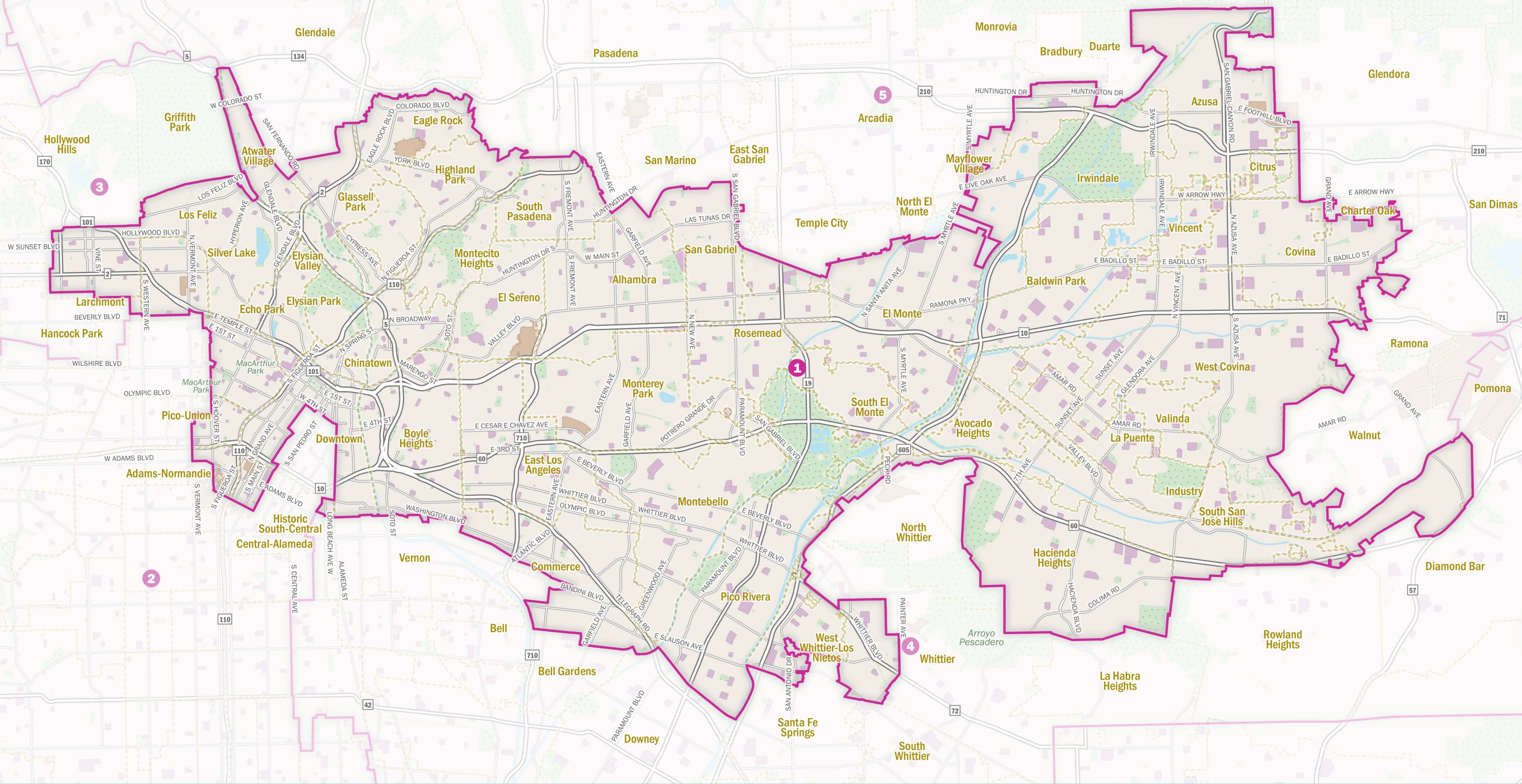


# People's Bloc Proposed Supervisor District 1

## Latinx VRA



Citizen Voting Age Population (CVAP) of Proposed Latinx VRA District

District	Total	% Total	Latinx	% Latinx	NH AIAN	% NH AIAN	NH Asian	% NH Asian	NH Black	% NH Black	NH White	% NH White
1	1206930	62.1%	658295	54.5%	5067	0.4%	275618	22.8%	44071	3.7%	214642	17.8%

### Population

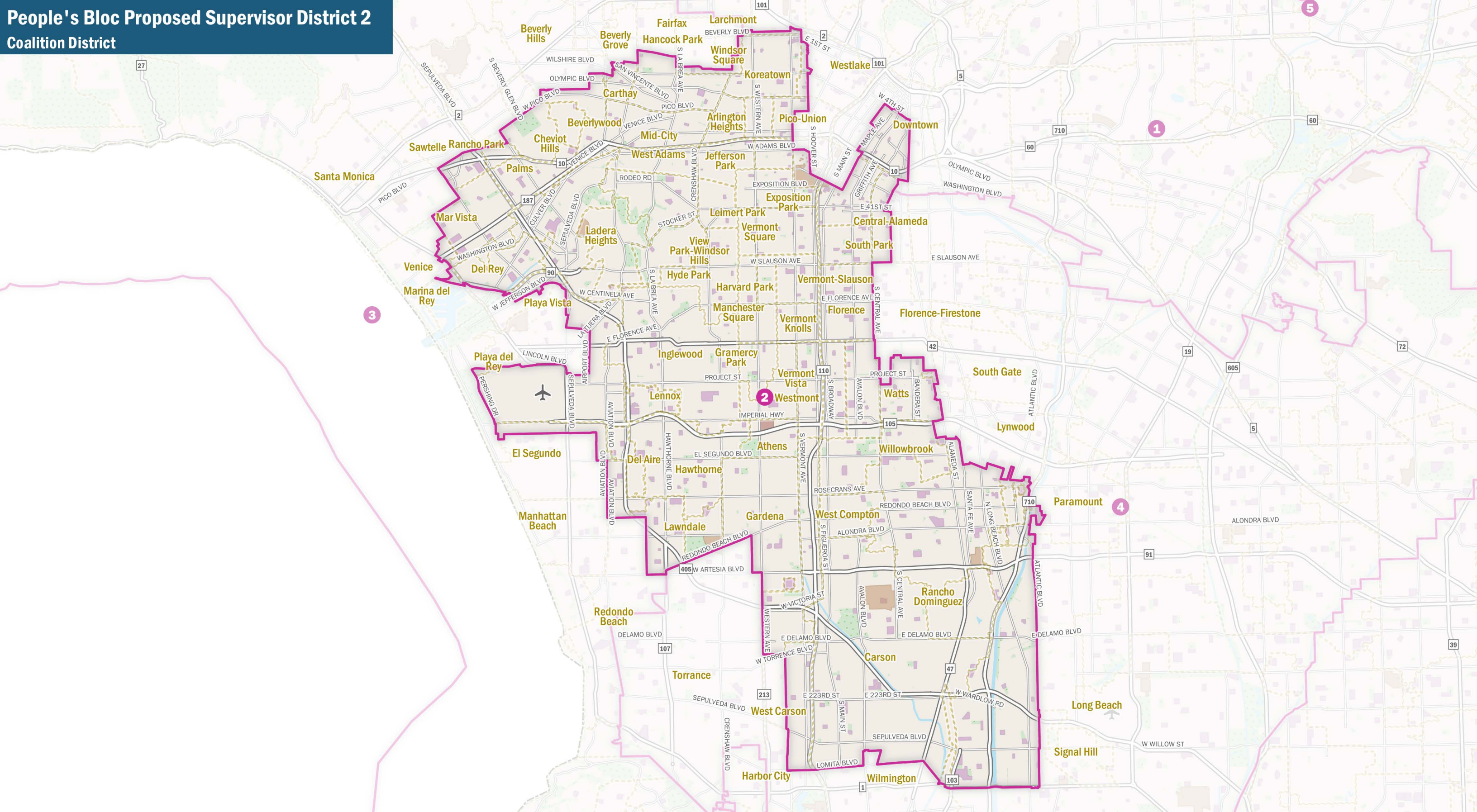
District	Total	Deviation	% Deviation	Latinx	% Latinx	NH AIAN	% NH AIAN	NH Asian	% NH Asian	NH Black	% NH Black	NH NHPI	% NH NHPI	NH Other	% NH Other	NH Multi-racial	% NH Multi-racial	NH White	% NH White
1	1942985	-66603	-3.3%	1180638	60.8%	3669	0.2%	418114	21.5%	48673	2.5%	1657	0.1%	9087	0.5%	35424	1.8%	245689	12.6%

- Proposed District
- City/Town/Neighborhood
- Universities, Colleges & Community Colleges
- County Boundary
- Public Schools (K-12)
- Parks and Open Space



Data sources: Statewide Database, Adjusted P.L. 94-171 and 2015-2019 CVAP (DOJ Tabulation)

# People's Bloc Proposed Supervisor District 2 Coalition District



Citizen Voting Age Population (CVAP) of Proposed Coalition District

District	Total	% Total	Latinx	% Latinx	NH AIAN	% NH AIAN	NH Asian	% NH Asian	NH Black	% NH Black	NH White	% NH White
2	1149091	58%	439973	38.3%	4325	0.4%	134684	11.7%	357645	31.1%	194711	16.9%

## Population

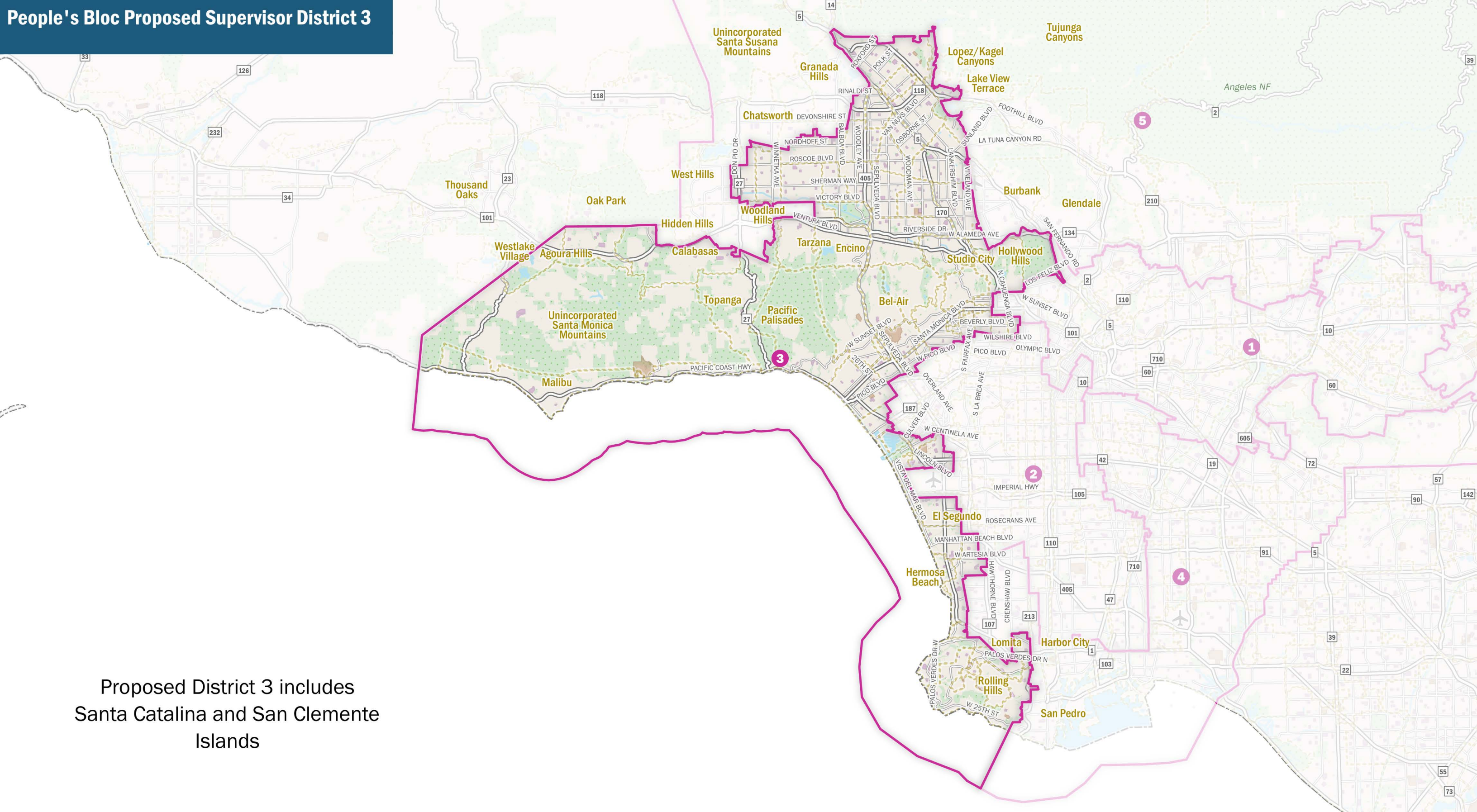
District	Total	Deviation	% Deviation	Latinx	% Latinx	NH AIAN	% NH AIAN	NH Asian	% NH Asian	NH Black	% NH Black	NH NHPI	% NH NHPI	NH Other	% NH Other	NH Multi-racial	% NH Multi-racial	NH White	% NH White
2	1980721	-28867	-1.4%	1026177	51.8%	3442	0.2%	212462	10.7%	409764	20.7%	7444	0.4%	14158	0.7%	59974	3%	247232	12.5%

- Proposed District
- City/Town/Neighborhood
- Universities, Colleges & Community Colleges
- County Boundary
- Public Schools (K-12)
- Parks and Open Space



Data sources: Statewide Database, Adjusted P.L. 94-171 and 2015-2019 CVAP (DOJ Tabulation)

# People's Bloc Proposed Supervisor District 3



Proposed District 3 includes Santa Catalina and San Clemente Islands

## Citizen Voting Age Population (CVAP) of Proposed District

District	Total	% Total	Latinx	% Latinx	NH AIAN	% NH AIAN	NH Asian	% NH Asian	NH Black	% NH Black	NH White	% NH White
3	1365490	67.2%	379991	27.8%	7534	0.6%	157541	11.5%	67503	4.9%	745065	54.6%

## Population

District	Total	Deviation	% Deviation	Latinx	% Latinx	NH AIAN	% NH AIAN	NH Asian	% NH Asian	NH Black	% NH Black	NH NHPI	% NH NHPI	NH Other	% NH Other	NH Multi-racial	% NH Multi-racial	NH White	% NH White
3	2031016	21428	1.1%	731401	36%	3153	0.2%	216663	10.7%	75432	3.7%	2198	0.1%	14189	0.7%	82521	4.1%	905416	44.6%

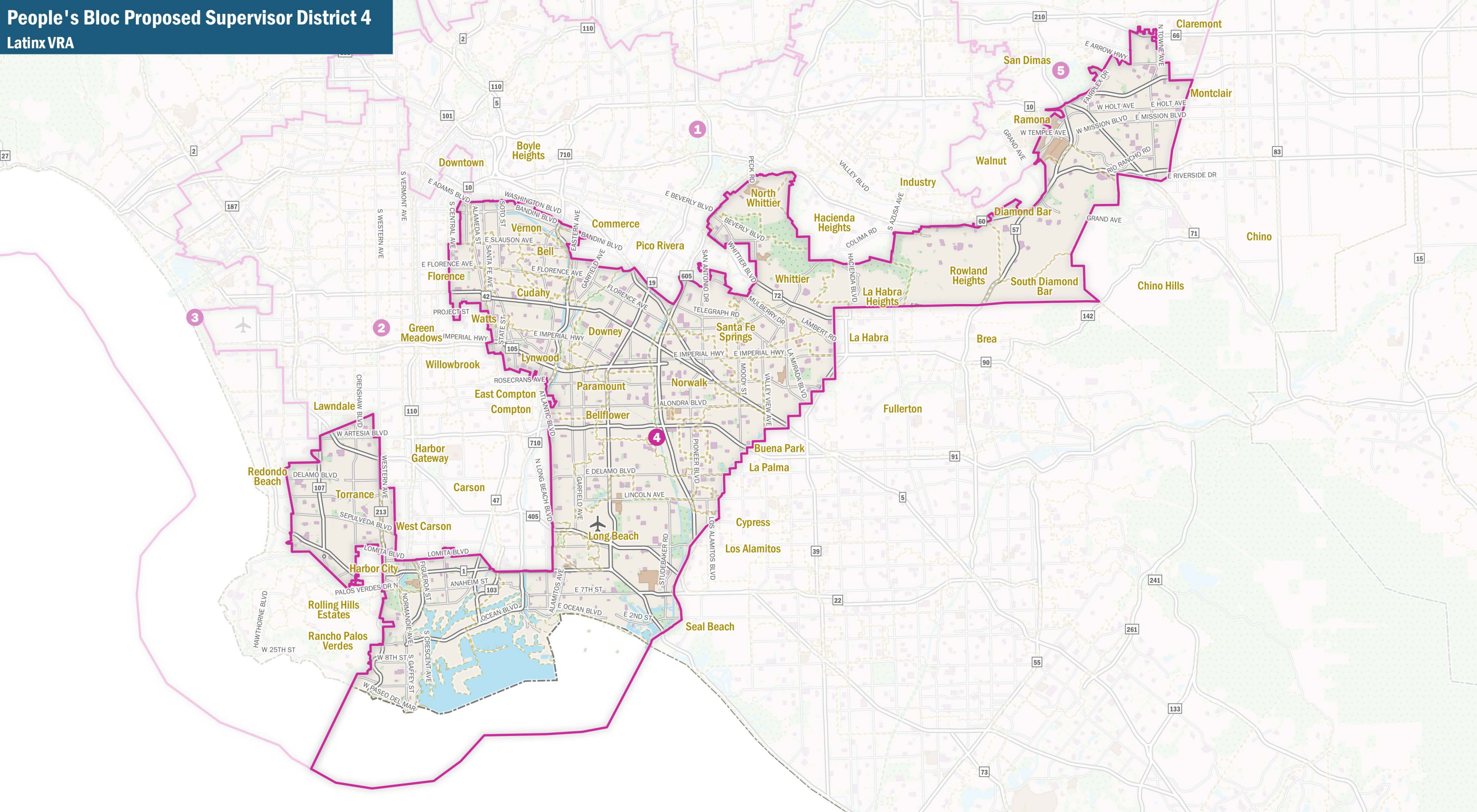
- Proposed District
- County Boundary
- City/Town/Neighborhood
- Public Schools (K-12)
- Universities, Colleges & Community Colleges
- Parks and Open Space



Data sources: Statewide Database, Adjusted P.L. 94-171 and 2015-2019 CVAP (DOJ Tabulation)

# People's Bloc Proposed Supervisor District 4

## Latinx VRA



**Citizen Voting Age Population (CVAP) of Proposed Latinx VRA District**

District	Total	% Total	Latinx	% Latinx	NH AIAN	% NH AIAN	NH Asian	% NH Asian	NH Black	% NH Black	NH White	% NH White
4	1285463	61.5%	645158	50.2%	6537	0.5%	200043	15.6%	96355	7.5%	324809	25.3%

### Population

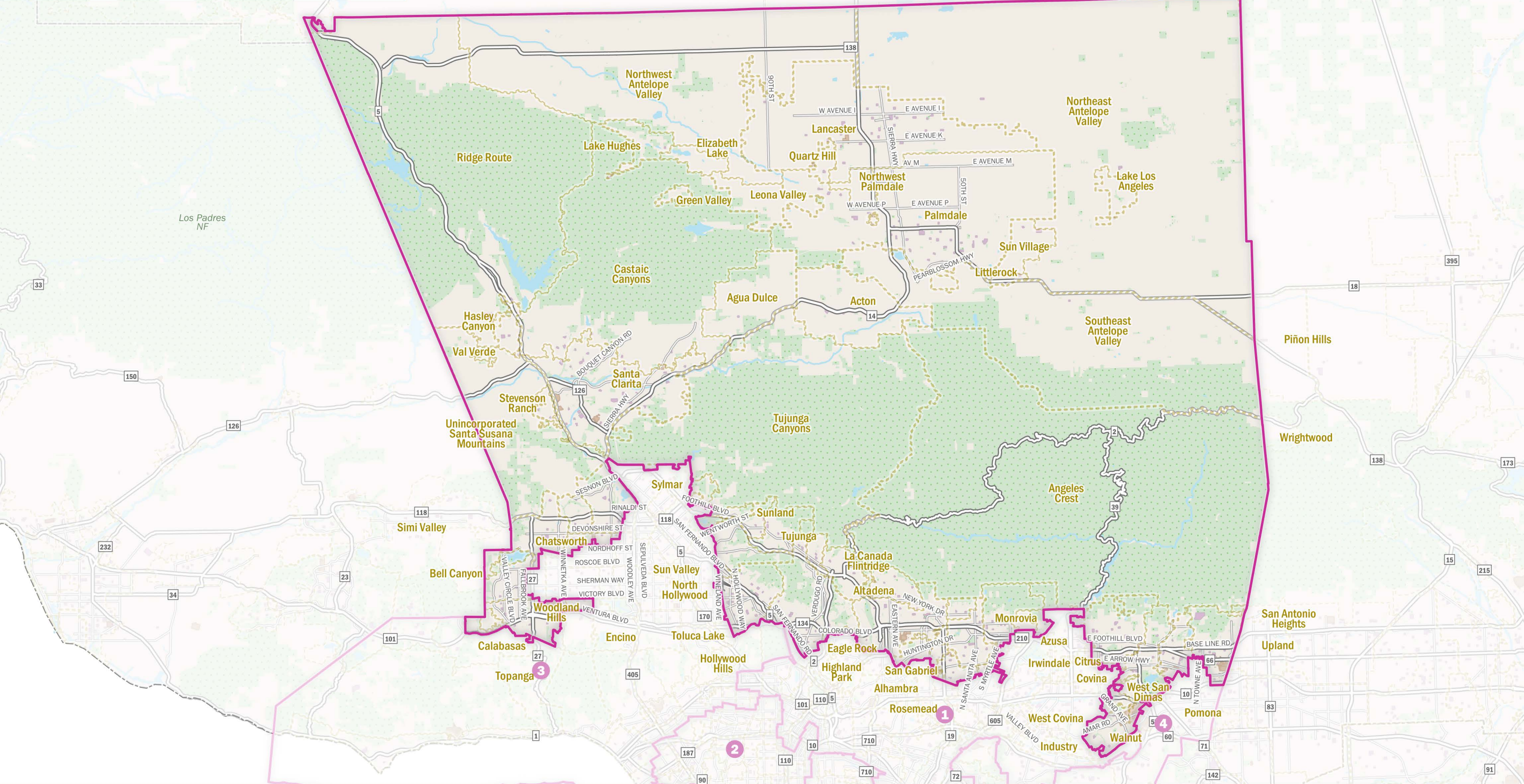
District	Total	Deviation	% Deviation	Latinx	% Latinx	NH AIAN	% NH AIAN	NH Asian	% NH Asian	NH Black	% NH Black	NH NHPI	% NH NHPI	NH Other	% NH Other	NH Multi-racial	% NH Multi-racial	NH White	% NH White
4	2088518	78930	3.9%	1246710	59.7%	4195	0.2%	298128	14.3%	117956	5.6%	7191	0.3%	10738	0.5%	54497	2.6%	349101	16.7%

- Proposed District
- City/Town/Neighborhood
- Universities, Colleges & Community Colleges
- County Boundary
- Public Schools (K-12)
- Parks and Open Space



Data sources: Statewide Database, Adjusted P.L. 94-171 and 2015-2019 CVAP (DOJ Tabulation)

# People's Bloc Proposed Supervisor District 5 Coalition District









## Citizen Voting Age Population (CVAP) of Proposed Coalition District

District	Total	% Total	Latinx	% Latinx	NH AIAN	% NH AIAN	NH Asian	% NH Asian	NH Black	% NH Black	NH White	% NH White
5	1345613	67.1%	344921	25.6%	11023	0.8%	214161	15.9%	97480	7.2%	670265	49.8%

## Population

District	Total	Deviation	% Deviation	Latinx	% Latinx	NH AIAN	% NH AIAN	NH Asian	% NH Asian	NH Black	% NH Black	NH NHPI	% NH NHPI	NH Other	% NH Other	NH Multi-racial	% NH Multi-racial	NH White	% NH White
5	2004896	-4692	-0.2%	636657	31.8%	4083	0.2%	328672	16.4%	122379	6.1%	2084	0.1%	12058	0.6%	80414	4%	818548	40.8%

 Proposed District  
 County Boundary  
 City/Town/Neighborhood  
 Public Schools (K-12)  
 Universities, Colleges & Community Colleges  
 Parks and Open Space



Data sources: Statewide Database, Adjusted P.L. 94-171 and 2015-2019 CVAP (DOJ Tabulation)